

# Aerial Map



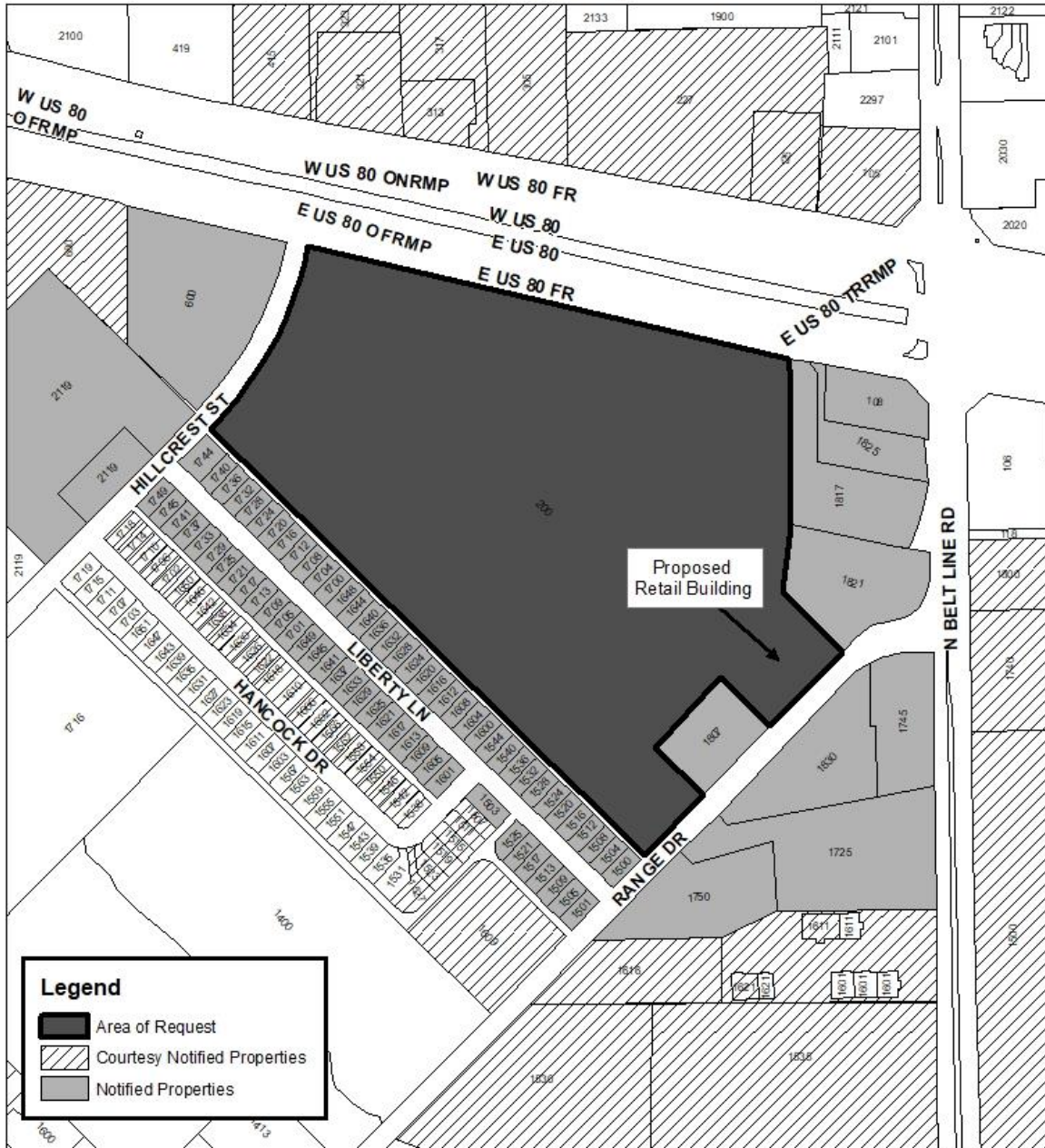
**Request:** Rezone to Planned Development - Commercial to allow modifications to the sign regulations and development standards for a new retail building.

**Applicant:** CA Mesquite

**Location:** 200 E US HWY 80



# Notice Map

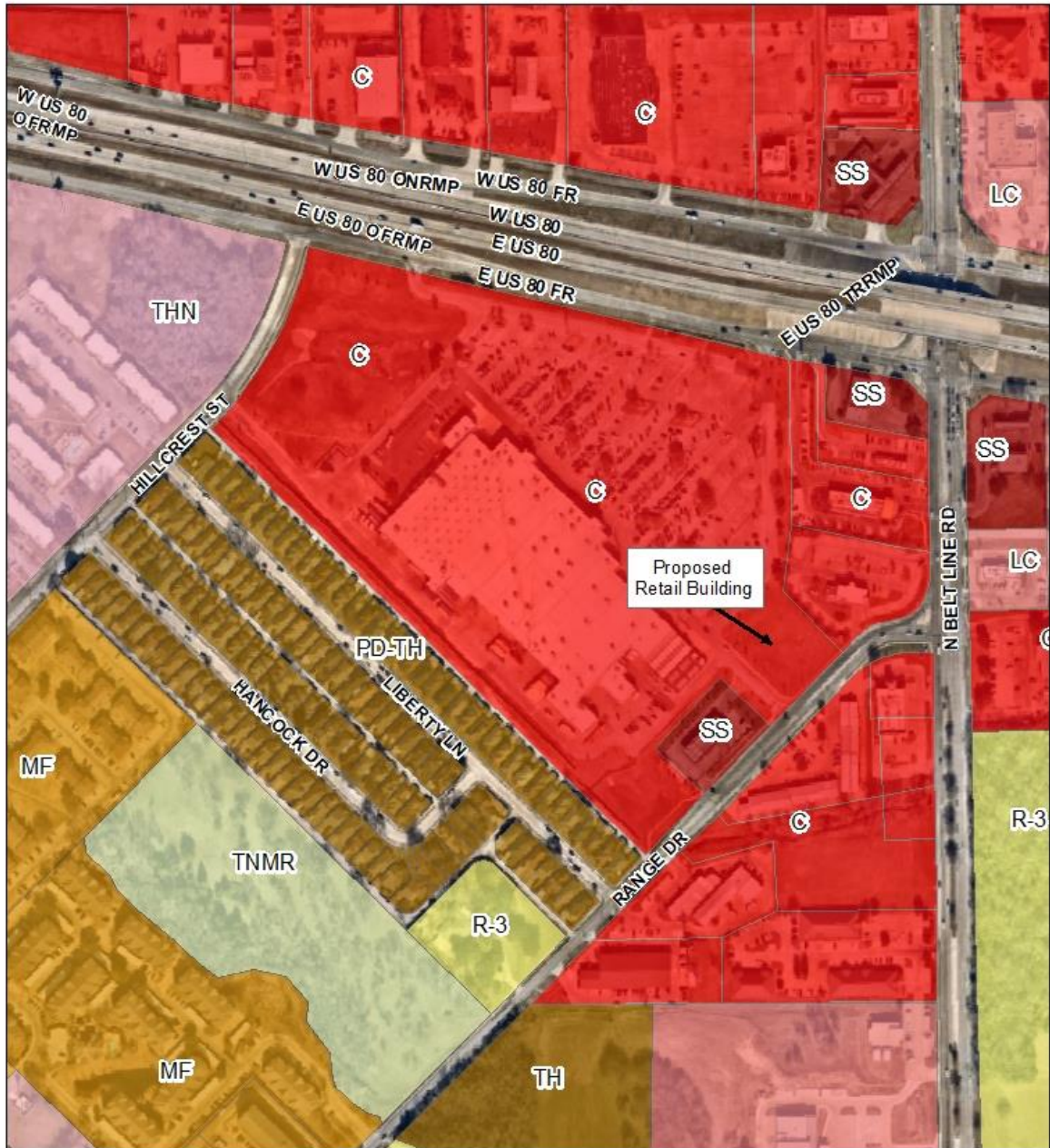


**Request:** Rezone to Planned Development - Commercial to allow modifications to the sign regulations and development standards for a new retail building.

**Applicant:** CA Mesquite  
**Location:** 200 E US HWY 80

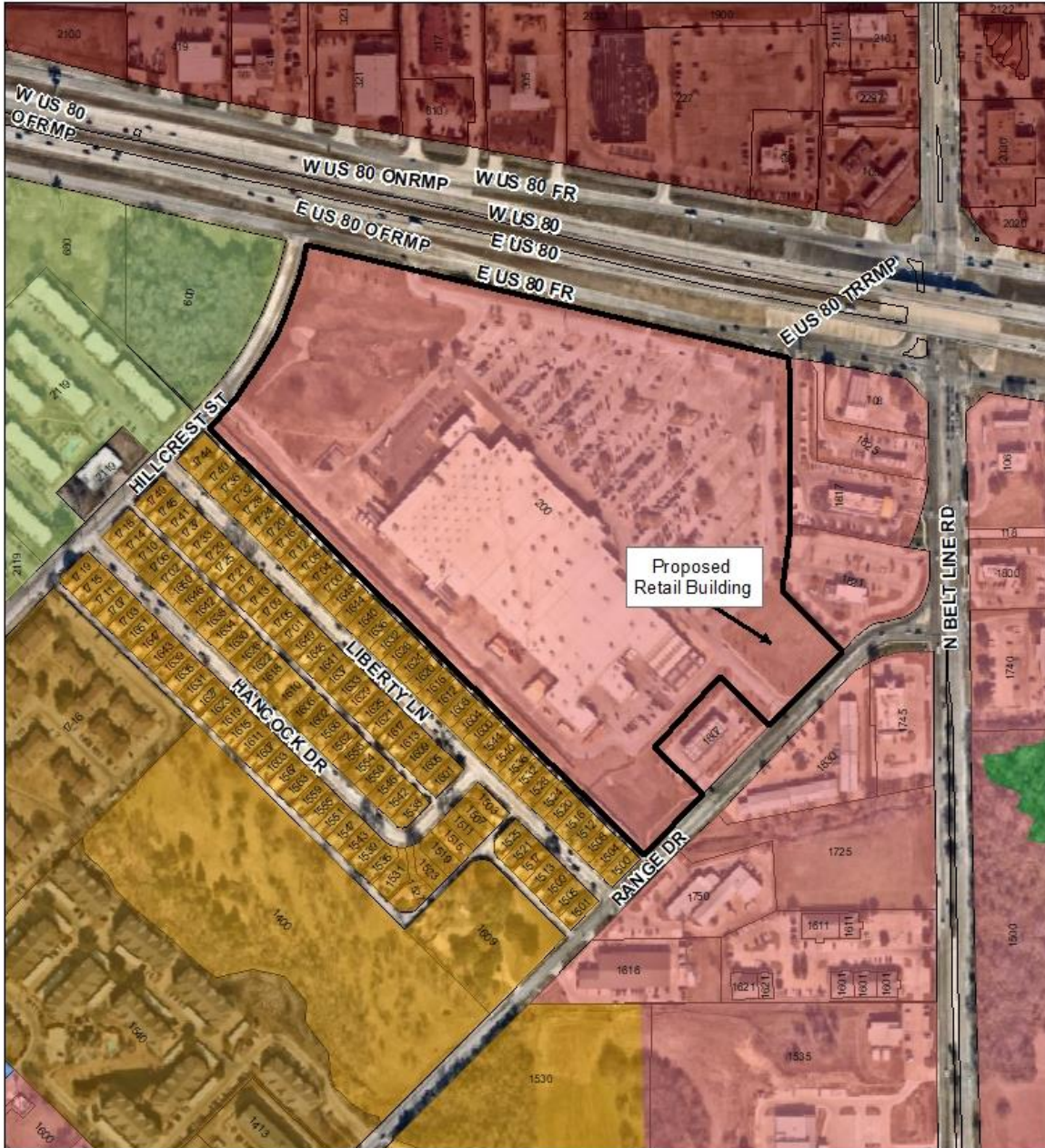


# Zoning Map



Legend		
<span style="display:inline-block; width:15px; height:10px; background-color:red; border:1px solid black;"></span> COMMERCIAL	<span style="display:inline-block; width:15px; height:10px; background-color:orange; border:1px solid black;"></span> MULTIFAMILY RESIDENTIAL	<span style="display:inline-block; width:15px; height:10px; background-color:brown; border:1px solid black;"></span> TOWNHOMES
<span style="display:inline-block; width:15px; height:10px; background-color:lightcoral; border:1px solid black;"></span> GENERAL RETAIL	<span style="display:inline-block; width:15px; height:10px; background-color:firebrick; border:1px solid black;"></span> SERVICE STATION	<span style="display:inline-block; width:15px; height:10px; background-color:lightgreen; border:1px solid black;"></span> TRADITIONAL NEIGHBORHOOD MIXED RESIDENTIAL
<span style="display:inline-block; width:15px; height:10px; background-color:pink; border:1px solid black;"></span> LIGHT COMMERCIAL	<span style="display:inline-block; width:15px; height:10px; background-color:yellow; border:1px solid black;"></span> SINGLE FAMILY RESIDENTIAL	<span style="display:inline-block; width:15px; height:10px; background-color:lightpink; border:1px solid black;"></span> TRUMAN HEIGHTS RESIDENTIAL

# Future Land Use Map



**Legend**

 Area of Request	 Neighborhood Retail
 Truman Heights Special Planning Area	 Commercial
 Medium Density Residential	 Public/Semi-Public
 High Density Residential	 Parks, Open Space, Drainage

