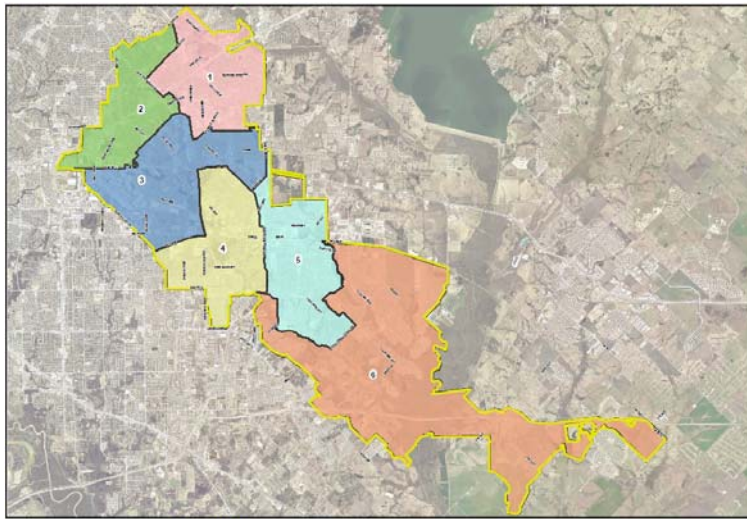




# Mesquite Fire Department Calls for Service

Calendar Year 2020	<i>Average Priority Response Times - <b>Citywide</b></i>	
	FIRE	5:26
	EMS	5:13

### Council Districts



**MESQUITE TEXAS**  
Real. Texas. Service.

Council District  
 1 (pink) 2 (green) 3 (blue) 4 (yellow) 5 (light blue) 6 (orange)  
 City Limit (yellow outline)

### *Number of Calls by Type per Calendar Year*

	2020	2019	2018
EMS	12,501	12,072	11,959
FALSE ALARM	1,320	1,458	1,449
FIRE	406	420	479
MOTOR VEHICLE ACCIDENT	1,740	1,849	1,892
OTHER CALLS FOR SERVICE	2,967	2,900	2,616
<b>Total</b>	<b>18,933</b>	<b>18,699</b>	<b>18,395</b>

### *2-Year Summary of Calls for Service 2019 & 2020*

