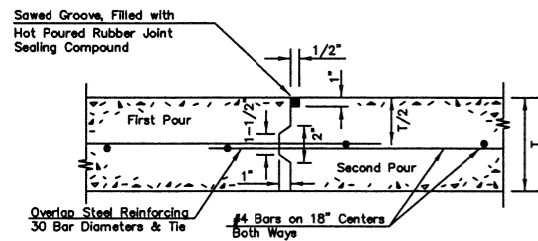
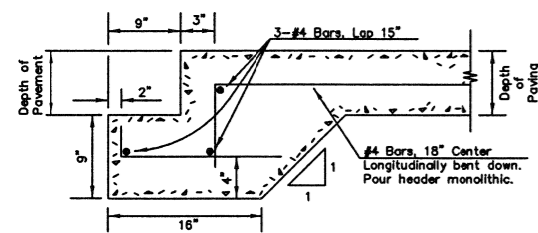


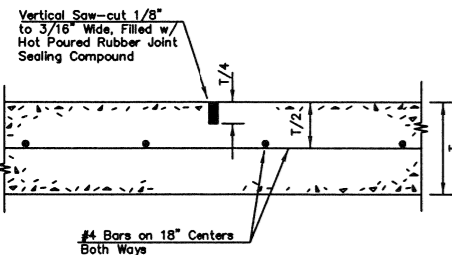
MONOLITHIC CURB DETAIL
NOT TO SCALE



CONSTRUCTION JOINT
NOT TO SCALE

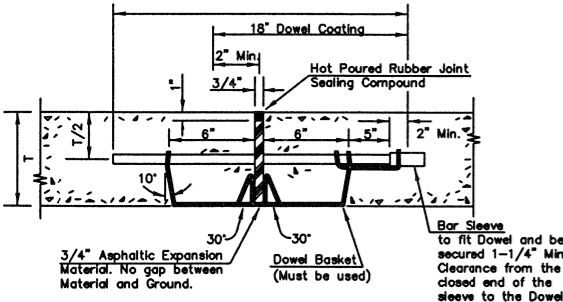


CONCRETE HEADER
NOT TO SCALE



SAWED CONTRACTION JOINT
NOT TO SCALE

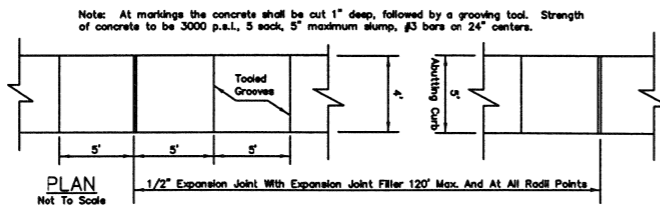
30" 1" Diameter Smooth Dowels @ 18" C.C. if Paving Thickness is less than 8" thick
30" 1-1/2" Diameter Smooth Dowels @ 18" C.C. if Paving Thickness is 8" or thicker



Note: Sleeves for dowels shall have an inside diameter of 1/16" greater than that of dowel & be of quality and design as to provide free movement of the dowel bar.

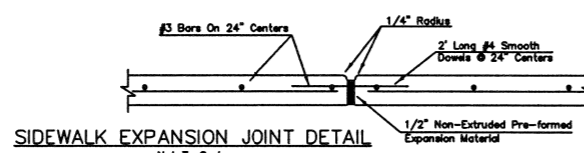
EXPANSION JOINT
NOT TO SCALE

Note: Provide expansion joint at each end of alley approach and at each street intersection, and spaced at a maximum of 600', such that no joint shall fall in a driveway approach.

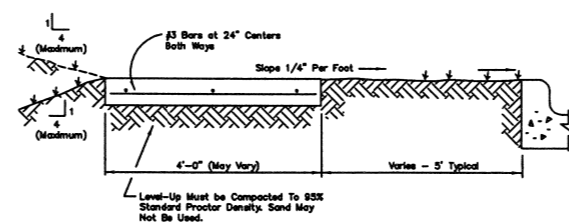


PLAN
Not To Scale

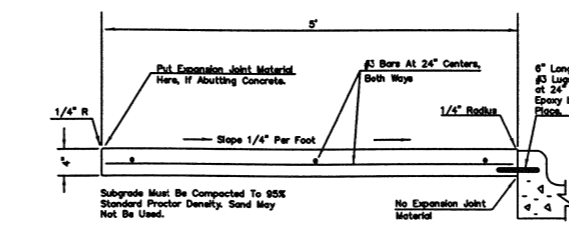
Note: At markings the concrete shall be cut 1" deep, followed by a grooving tool. Strength of concrete to be 3000 p.s.i., 5 sack, 5" maximum slump, #3 bars on 24" centers.



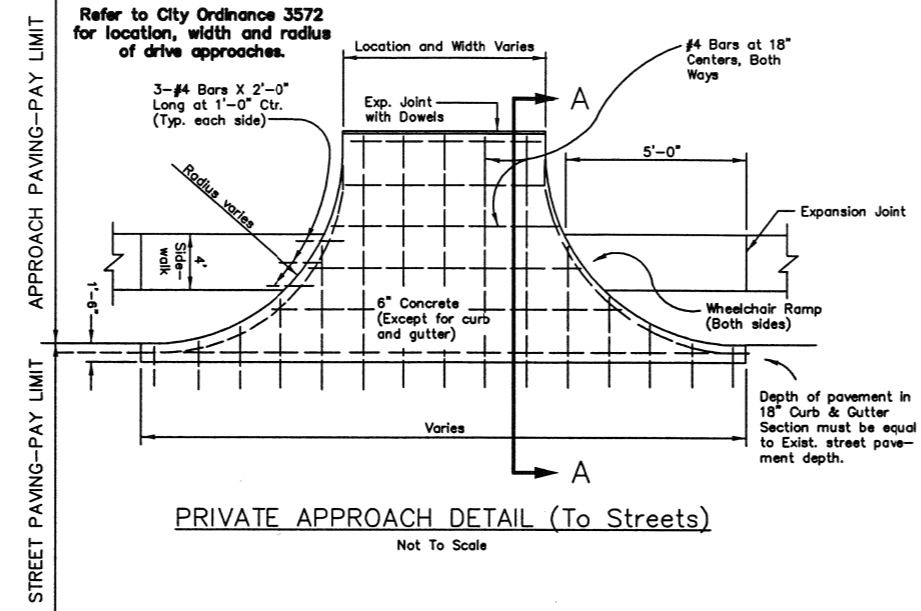
SIDEWALK EXPANSION JOINT DETAIL
Not To Scale



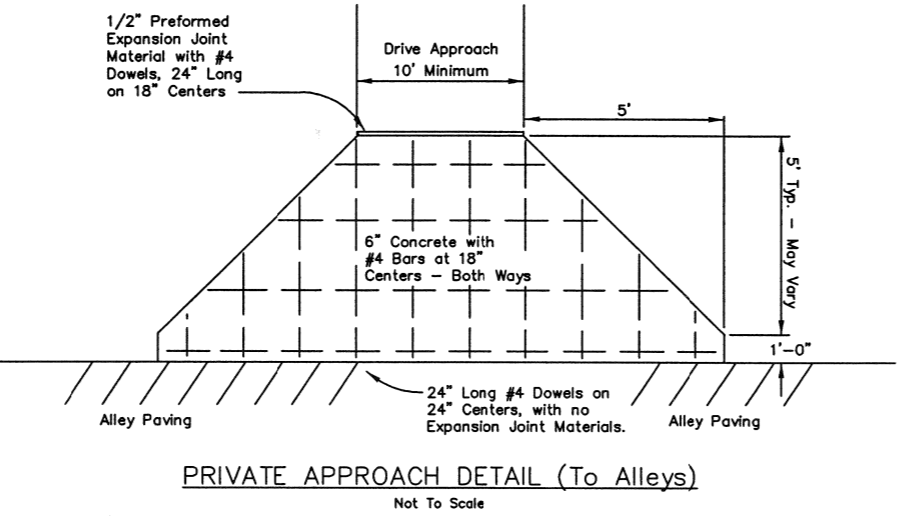
TYPICAL SECTION (4' Sidewalk Away From Curb)
Not To Scale



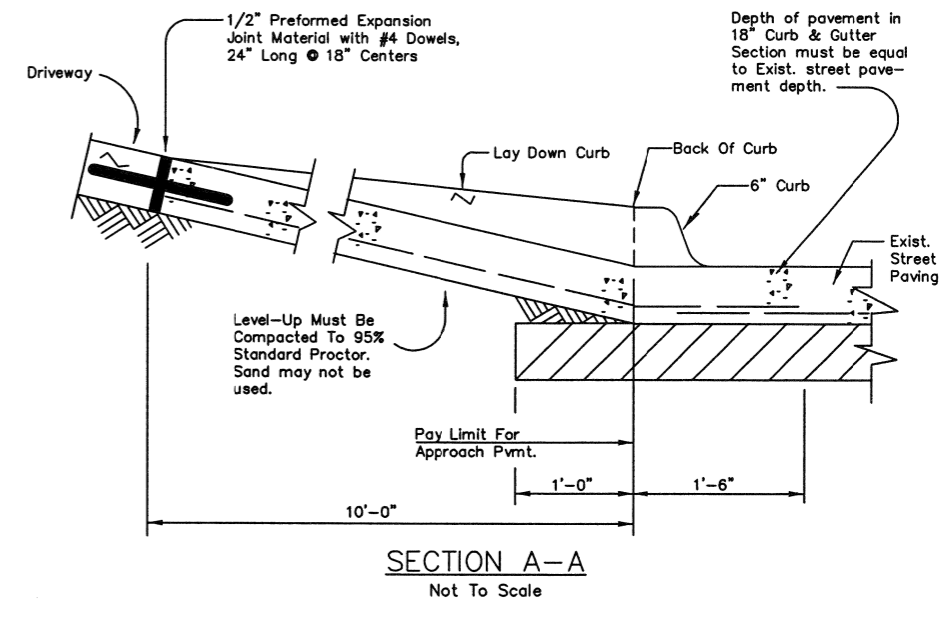
TYPICAL SECTION (5' Sidewalk Next To Curb)
Not To Scale



PRIVATE APPROACH DETAIL (To Streets)
Not To Scale



PRIVATE APPROACH DETAIL (To Alleys)
Not To Scale



SECTION A-A
Not To Scale

SUBGRADE AND FILL

- All fill and lime subgrades shall be placed in 8" compacted lifts and be compacted to 95% of Standard Proctor at a moisture range of 0% to plus 6% of optimum moisture. Moisture level must be maintained, by wetting or application of asphalt emulsion prime coat (0.25 to 0.50 gal/S.Y.) if necessary, until placing of concrete paving. All fill and lime subgrade for streets shall have densities taken at a rate of one density per 300 L.F. of street. Gradations shall be at a rate of one per 300 L.F. minimum of 60% passing #4 Sieve and 100% passing 1/2" Sieve. Locations of densities and gradations shall be determined by the City Public Works Construction Inspector.
- For L1 and L2 streets, 6" Lime stabilized subgrade shall be constructed using Type "A" Hydrated Lime at an application rate of 33 lbs./S.Y., per NCTCOG Section 2.5.2. All other streets shall have 8" Lime at an application rate of 44 lbs./S.Y., per NCTCOG Section 2.5.2.
- Final backfill of medians not to be covered with concrete or pavers shall be sandy loam or topsoil approved by the City Engineer.
- Slopes from back of sidewalk to property line are to be a maximum of 4:1, and slopes from curb to sidewalk are to be 1/4" per foot towards curb. Sidewalk cross-slope may be tilted toward or away from street in order to eliminate standing water and maintain natural drainage patterns.
- Sand may not be used for level-up under paving.

PAVING

- Concrete pavement, curb & gutter, sidewalks and driveways are to be 3600 P.S.I., 28-day strength, 6 sacks cement per cu. yd. minimum, with 1" to 3" slump for machine pours and 3" to 5" slump for hand pours. Fly ash may be substituted for up to 20% of the cement content requirement at a 1 to 1.25 cement to fly ash substitution rate.
- Reinforcing shall be #4 bars at 18" C.C. each way. Reinforcing shall conform to ASTM A-615 and be a minimum grade of 60 per ASTM A-370. Reinforcing steel bar laps are to be 30 bar diameters or 15" per ACI 318, section 12.15, whichever is greater. 50% of intersections are to be secured with tie wire and supported with chairs.
- All concrete must be mechanically vibrated.
- All concrete is to be membrane cured for 72 hours minimum. White curing compound is to be applied, per manufacturer's recommendations, to all exposed concrete surfaces (including backs-of-curb) immediately after completion of paving operations, per ASTM C-309, Type 2, NCTCOG Section 2.2.1(b)(1).
- Finish all concrete street paving wider than 37' with a tine finish (1"), perpendicular to traffic flow, broom curb and gutter parallel to traffic 12" from curb. Broom finish median paving.
- No vehicle traffic shall be permitted on newly paved areas for seven days after pour or until 3000 P.S.I. is achieved.
- Extend all sawed contraction joints in streets and alleys through private drive approaches to the first expansion joint.
- Joint sealer is to be a hot-poured, rubber base compound, ASTM D-3406, per NCTCOG 2.2.10(b).
- If lime subgrade is not installed under left turn lane, increase paving depth to 12".
- Medians under 7' in width, from back-of-curb to back-of-curb, shall be covered with 4" concrete median pavement or 4" concrete slab with 3.5" Pavestone (Holland Stone Antique Red).
- Divided paving sections may vary depending on adopted City Thoroughfare Plan classification and City Engineer.
- Divided streets require continuous 2" PVC street lighting conduit and irrigation systems. Consult the City Engineer for details (Ord. No. 2617).
- Maximum allowable driveway approach slopes are as follows:

	Street	Alley
Com.	7%	11%
Res.	10%	14%

TRAFFIC CONTROL

- Contractor shall provide traffic control plan at least 48 hours prior to any work in a city street. Traffic control measures shall conform to the Texas Manual on Uniform Traffic Control Devices and the City Work Zone Traffic Control Guidelines. Traffic control measures shall be installed for any work activity that takes place on or adjacent to any city street or roadway. The City Engineer may require the traffic control plan to be designed and sealed by an engineer licensed in the State of Texas.
- Contractor shall contact the Traffic Engineering Division, (972) 216-6917, at least 48 hours prior to work requiring the removal or relocation of traffic signs, traffic control equipment or other traffic control appurtenances.

ADA REQUIREMENTS

- A wheelchair ramp must be constructed for all street intersections per TxDOT Roadway Standard Details PED-05 (four sheets).
- No obstructions (fire hydrants, power poles, guy wires, etc.) shall be allowed in or over sidewalk paving.

APPROVED: *M. H. [Signature]* CITY ENGINEER Date: 11-30-05

Rev. No.	Date	Description
1	May '01	
2	Sept. '03	Complete Revision
3	Nov. '05	Added Details

PAVING SHEET THREE
ENGINEERING DIVISION
STANDARD DETAILS
City of Mesquite, Texas

DATE	SCALE	FILE
November 2005	N.T.S.	Paving Sheet 3