

Accompaniment

MESQUITE ARTS COUNCIL



MESQUITE ARTS CENTER

Is funded in part by the Mesquite Arts Council, First State Bank and Chicago Title Co. Media sponsorships include the Mesquite News, KEOM 88.5 and

The Dallas Morning News
dallasnews.com

Mesquite Illuminated Columns & Kinetic Sculpture

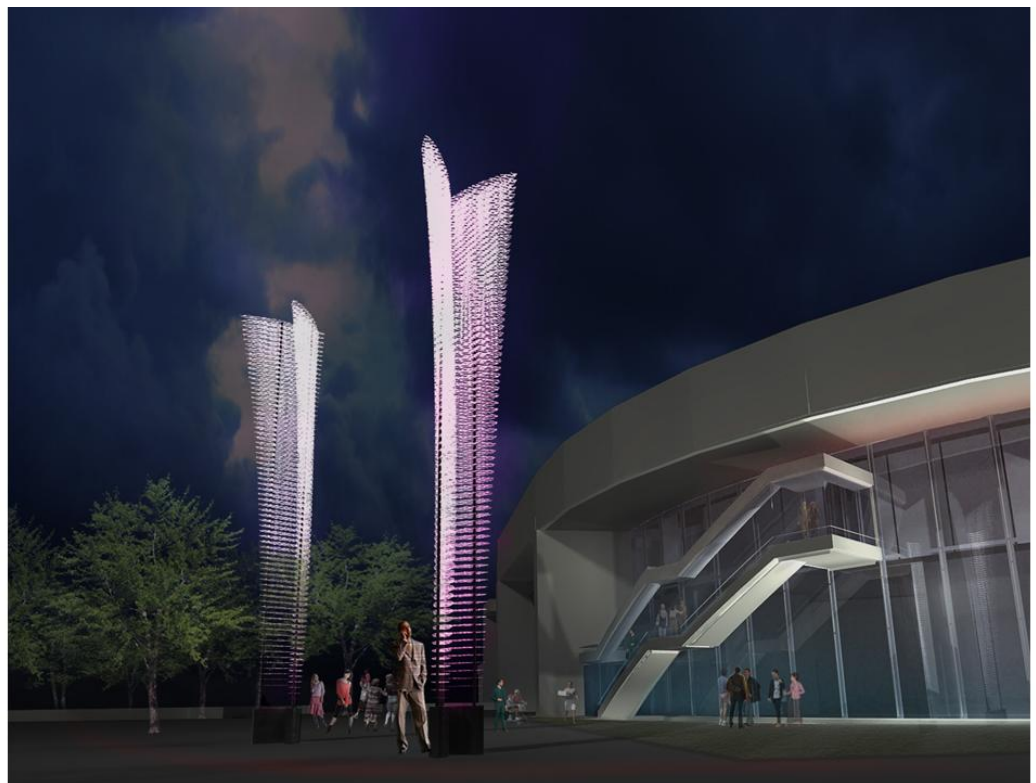
Two new commissioned pieces of public art will become a part of the new City Hall in Mesquite. On May 18, 2009 the Mesquite City Council authorized contracts with artists **Tim Prentice** of Connecticut and **Cliff Garten** of California for work to begin immediately. “The works are both elegant and monumental” said one public art committee member. A beacon is the word many use to describe the two, twenty-six foot illuminated columns by artist Cliff Garten that will stand in the front plaza. And the interior artwork by Tim Prentice in the large, two-story public area provides a calming yet somewhat whimsical statement. The art pieces are harmonious to the Brinkley Sargent Architect designed building.

Citizens will know immediately the place where “the people’s business is conducted” and visitors will see the modern and contemporary part of Mesquite that easily compliments the traditional setting that is found in most ring cities. Our Mesquite City Council chose to embrace the reality of revitalization several years ago and to date the neighborhoods, retail store fronts, tourism initiatives and now this significant public art statement are the realization of these goals. Although not complete and much work remains, these steadfast ideals are creating a Mesquite looking to a future full of promise.

Progress reports on these projects will continue in Accompaniment and the story can be followed online at:

www.mesquiteartscenter.org

(continued on page 2)



3 waves of floating art



Tim Prentice, an artist from Connecticut has been commissioned to place the interior art work in the new Mesquite City Hall.

Made primarily of aluminum plates suspended by metal rods on wires, the work moves in accordance with the air currents. The slightest breeze from the air-conditioning, a passerby walking along the balcony or the

opening of doors can affect the movement of the artwork. The gentle movement and slight curves of each piece creates an infinitesimal number of sculptural forms. Coming into the Mesquite City Hall the kinetic sculpture will appear one way and upon your departure, the work will have changed its structure.

The exterior monuments by Mr. Garten are inspired by the leaf of the Mesquite tree. His signature “stacking” of steel plates will soar twenty-six feet into the air in front of City Hall. The flat plates will be cut with a water jet, stacked one on top of the other with a space between and turned slightly as the piece rises above the ground. Visible during the day by sunlight, the two monuments will be lit at night with an ever changing palette of color from the LED, in-ground spotlights.

The public art commission for the Cliff Garten exterior monument totals \$150,000 and the interior artwork by Tim Prentice is \$75,000. Both of these artists currently have international commissions although the Mesquite installation is expected to take place by the autumn of 2010.

In keeping with the integrity of the Brinkley Sargent Architect designed building these formal sculptural statements are inspired by nature and will inhabit an urban project that is environmentally sensitive. Seeking a LEED designation, the entire footprint of the project, including landscaping will promote a forward thinking philosophy as demonstrated by the commitment of the leadership in Mesquite.

Thank you to the voting members of the Mesquite Public Art Committee: Michael Cross, Rosemary Heffley, Debi Jenkins, Kass Prince and Jim Watts; other committee members include Hal Sargent, architect and City of Mesquite staff members Valerie Bradley, Mark Hindman, Michael Templeton and Carol Zolnerowich. Recognition of leadership for this project is also due to Mayor Monaco, the Mesquite Arts Council Board of Directors and the Mesquite City Council. Consultants for this public art project include Emily Blumenfeld and Meredith McKinley of Via Partnership.